



Spanish Property Sales

Making Clients Happy Since 2002

0034 666 271 461

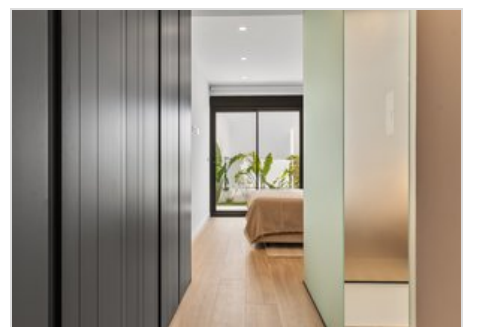
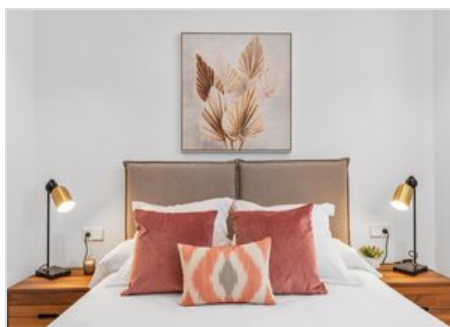
mail@spanish-property-sales.net

2 bedroom Apartment in Benitachell

Benitachell, Alicante, Spain

473.000 €

Ref: 769302



Bedrooms
2

Bathrooms
2

Build
83 m²

Plot
m²

Pool
Yes

www.spanish-property-sales.net





2 bedroom Apartment in Benitachell

473.000 €

Benitachell, Alicante, Spain

Ref: 769302

Description

The Montecala Gardens development, located in Cumbre del Sol within the municipality of Benitachell, between Jávea and Moraira, invites you to see the Costa Blanca from a different perspective. This apartment complex has been designed for those seeking a second home by the sea, surrounded by nature, tranquillity, and high-quality services throughout the year.

Montecala Gardens stands out for its modern, functional, and sustainable design. Each block has a limited number of homes; only five apartments per building, ensuring privacy and tranquillity. The houses feature spacious terraces, private gardens, or solariums, depending on the apartment, and offer open views that strengthen connection with the natural environment.

The apartments are fully equipped, featuring a layout that maximises space and natural light. They are available with two or three bedrooms and two bathrooms, an open-plan kitchen connected to the living room, a terrace, and premium finishes. Additionally, they include ducted air conditioning, underfloor heating, continuous ventilation, a hybrid aerothermal system, and aluminium joinery with thermal bridge break, all of which contribute to high energy efficiency.

Living in Montecala Gardens also means you can also enjoy the communal areas of the consolidated Pueblo Montecala estate, with several swimming pools, a social club, a children's playground, large garden areas, and community parking. All integrated into the surroundings of Cumbre del Sol, an exclusive destination offering services such as a supermarket, an equestrian centre, sports facilities, restaurants, and the prestigious international Lady Elizabeth School.

Some of the most stunning coves on the Alicante coast are just a few minutes away, along with a network of trails by which you can explore the Mediterranean landscape on foot or by bike. The close proximity to towns such as Moraira, Jávea, Altea, or Calpe, combined with excellent transport links to airports and AVE (High-speed train) stations, makes Montecala Gardens an ideal choice for both holiday stays and permanent residence.





Spanish Property Sales

Making Clients Happy Since 2002

☎ 0034 666 271 461

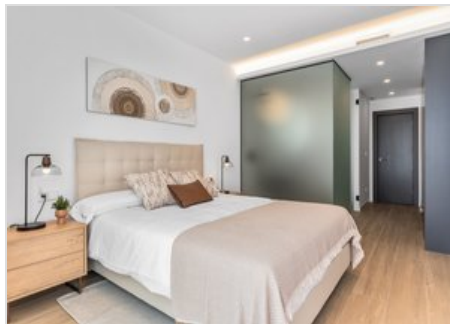
✉ mail@spanish-property-sales.net

2 bedroom Apartment in Benitachell

Benitachell, Alicante, Spain

473.000 €

Ref: 769302



www.spanish-property-sales.net

